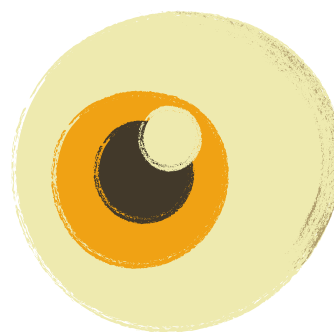
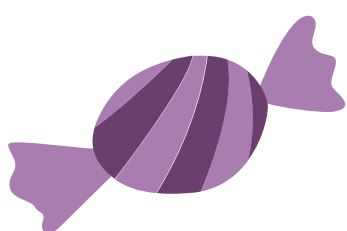
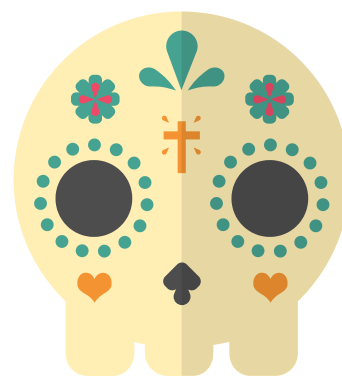
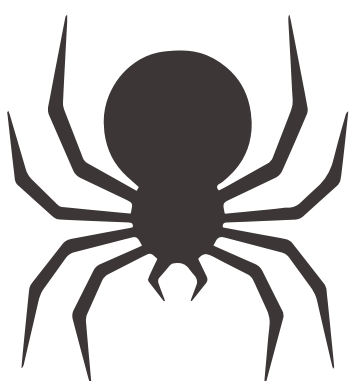
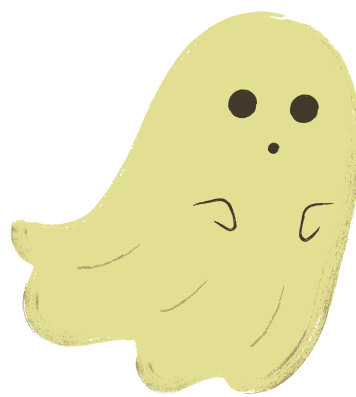
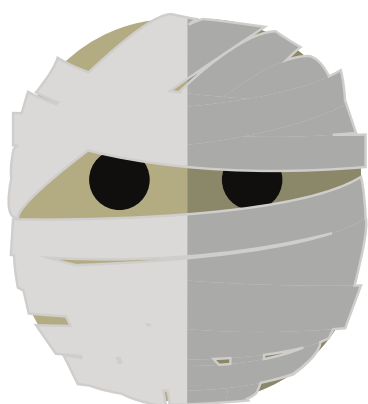
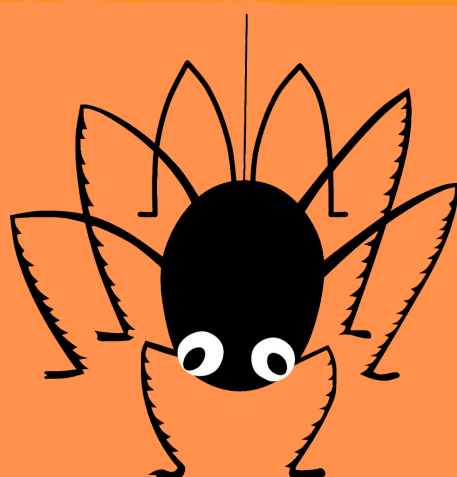


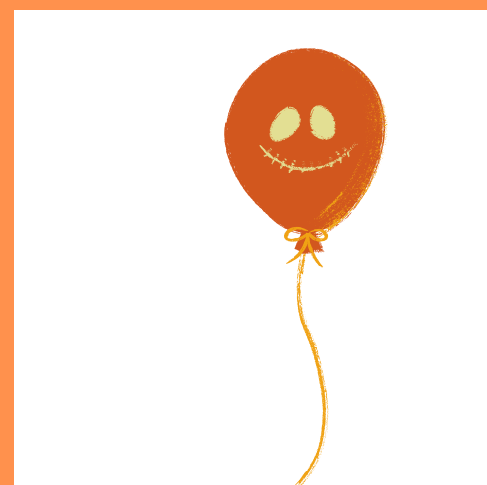
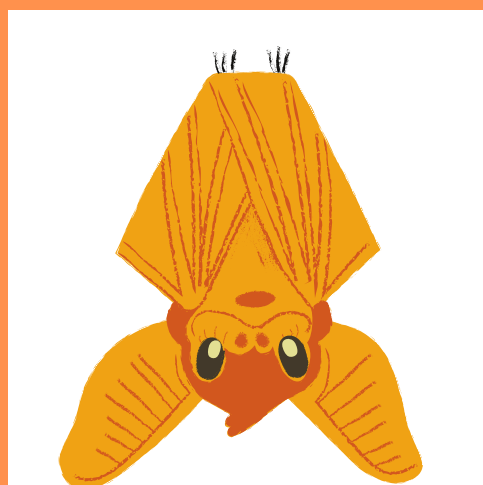
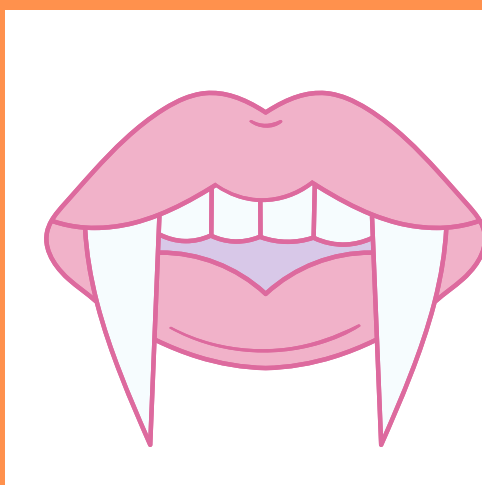
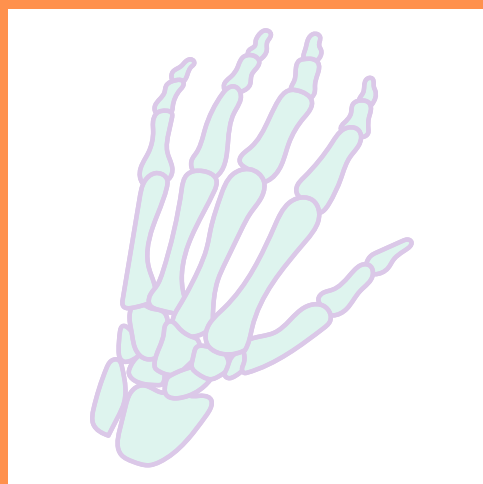
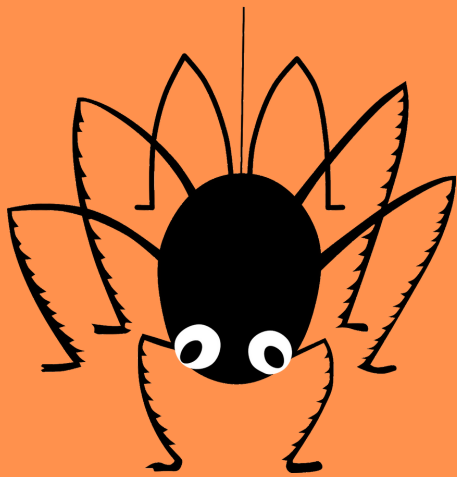
BINGO

HALLOWEEN



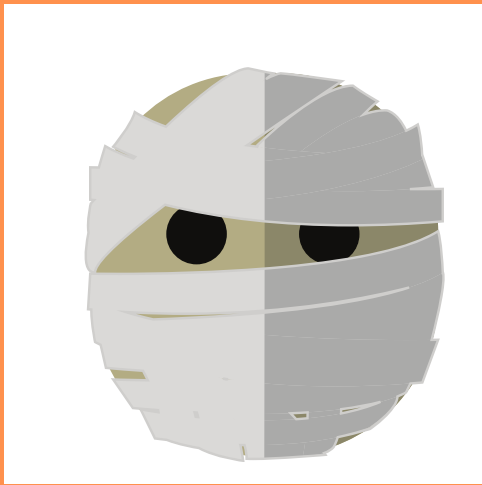
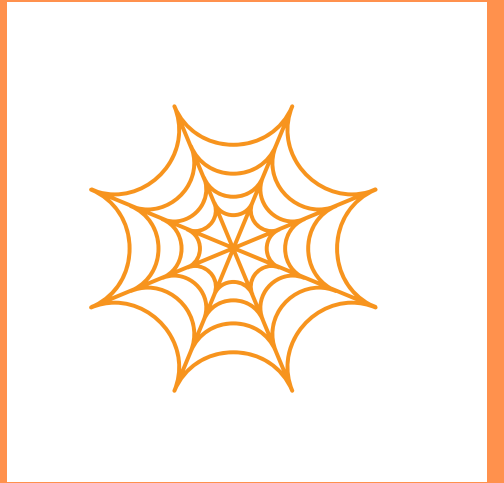
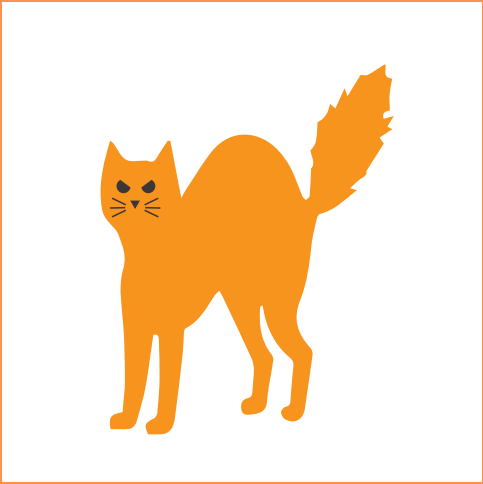
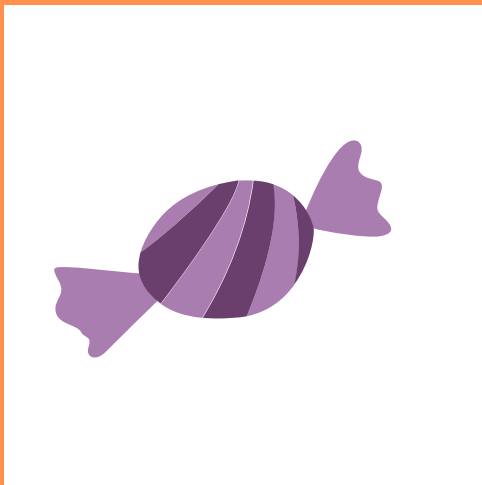
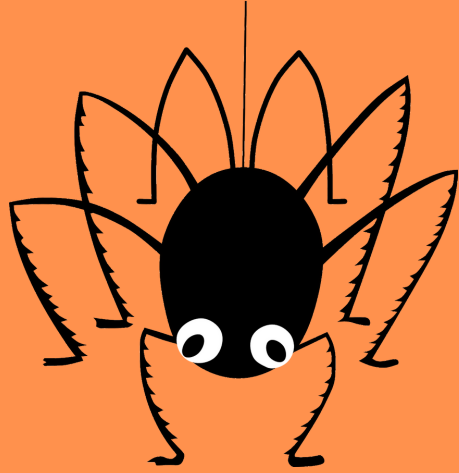
BINGO

HALLOWEEN



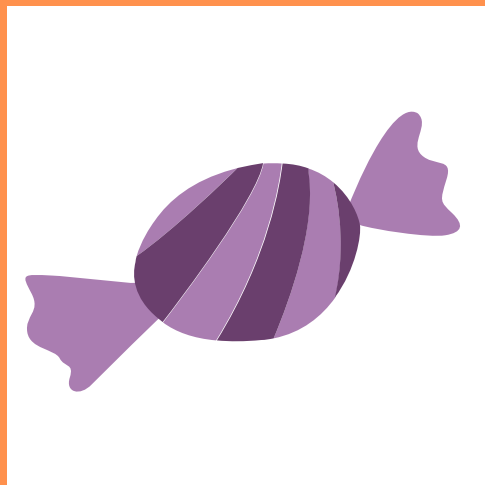
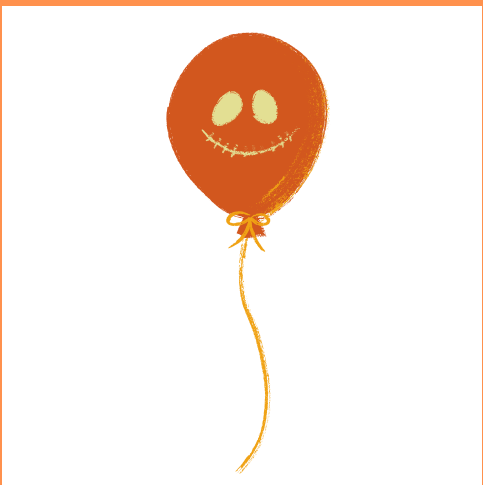
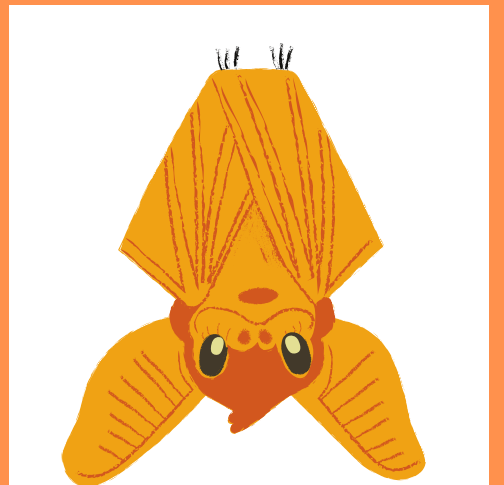
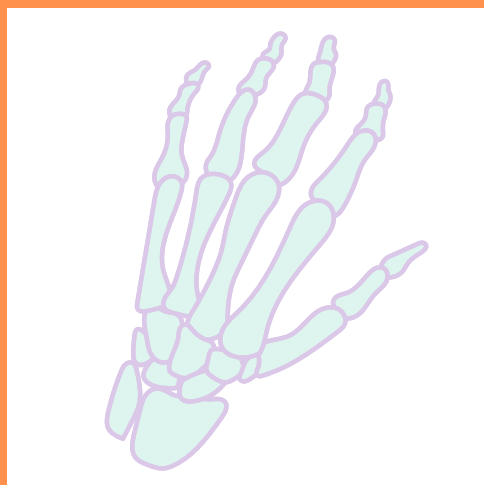
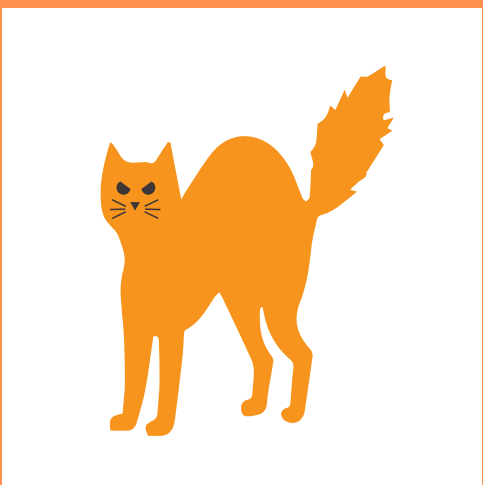
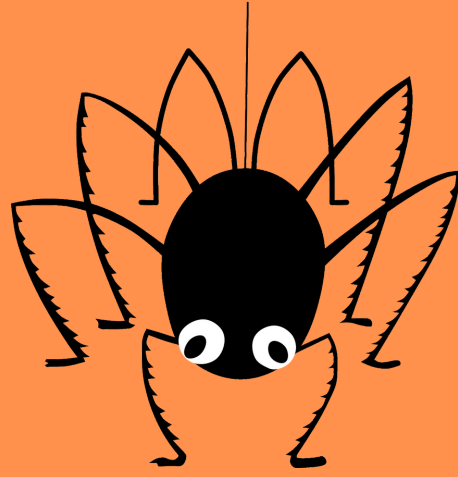
BINGO

HALLOWEEN



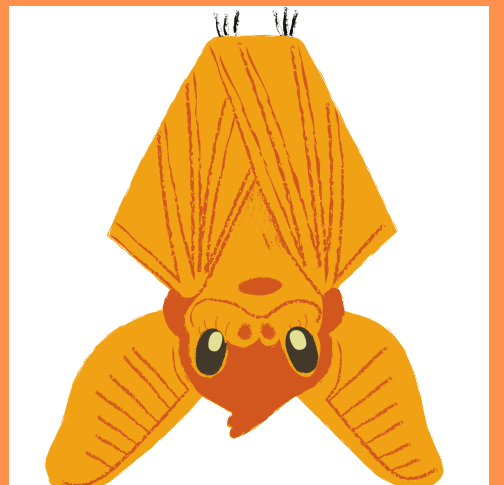
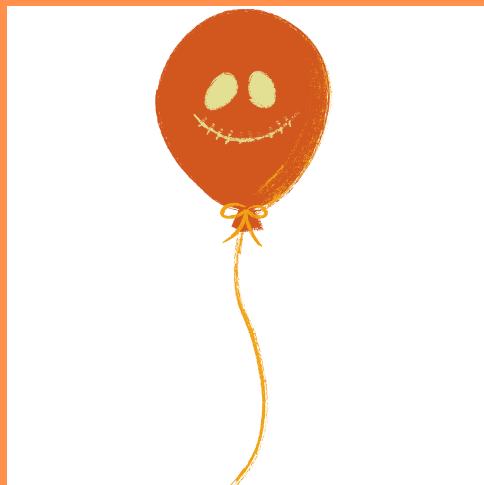
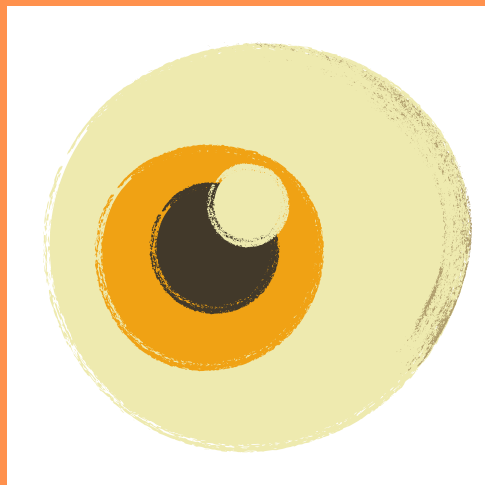
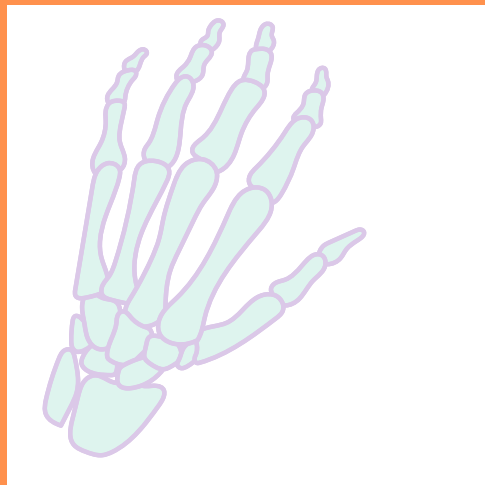
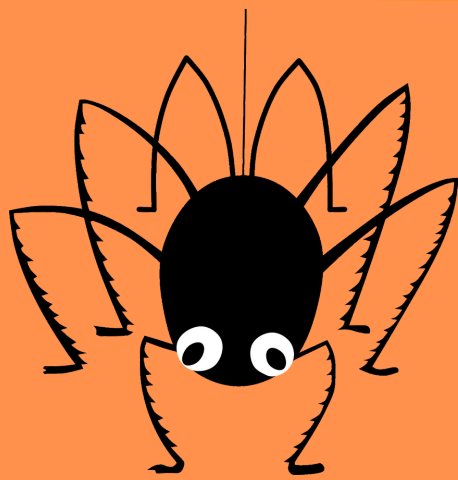
BINGO

HALLOWEEN



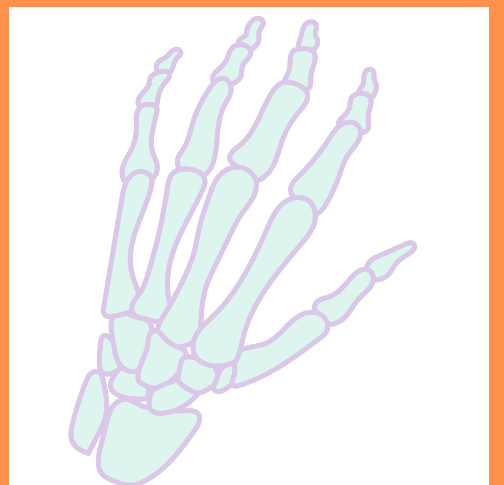
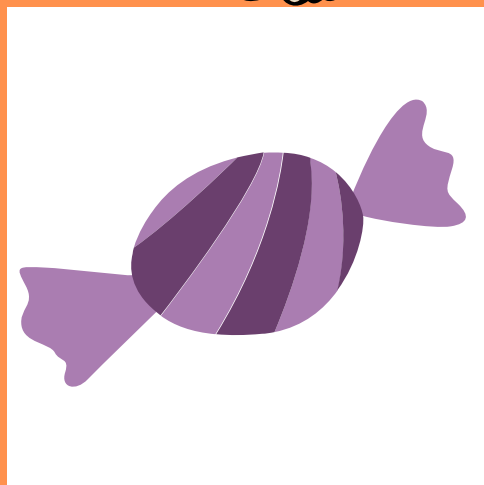
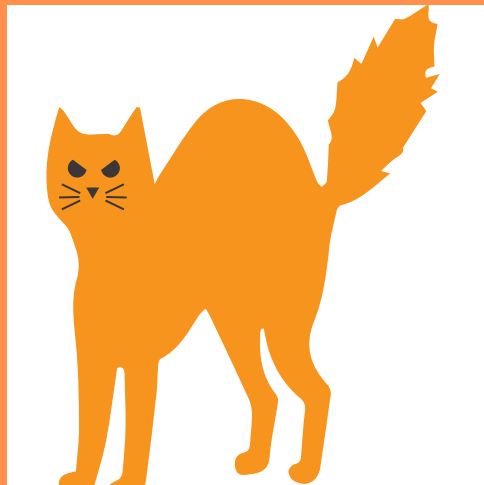
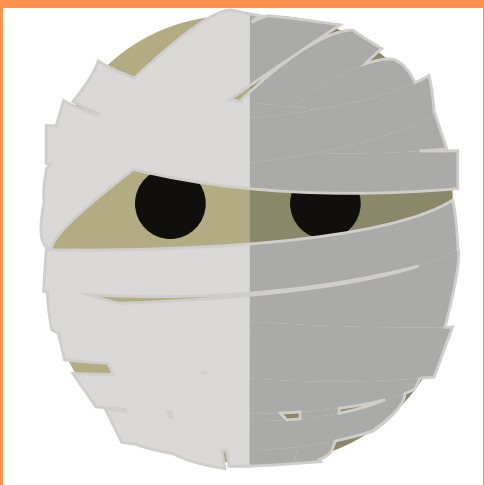
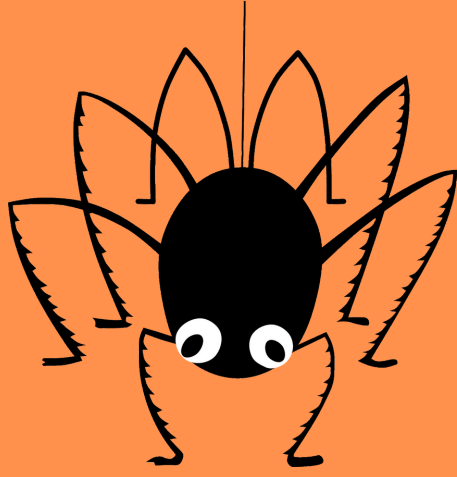
BINGO

HALLOWEEN

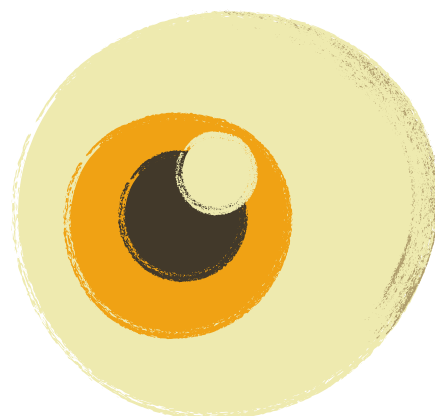
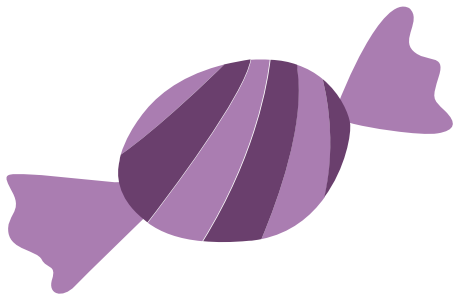
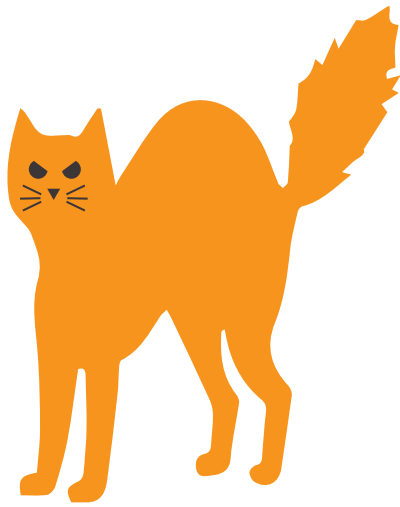
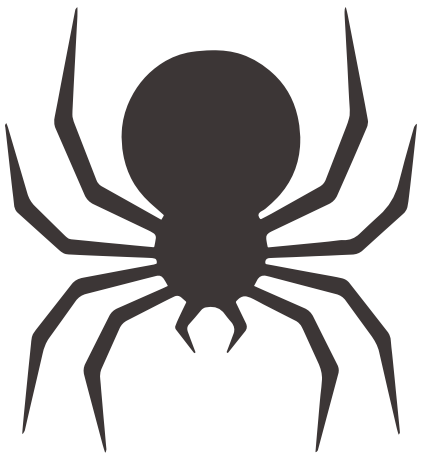
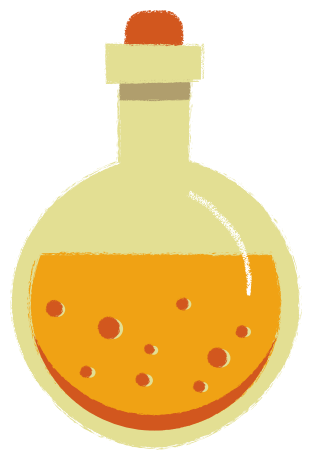
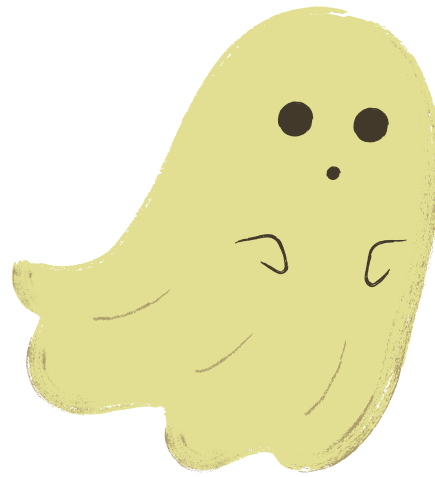
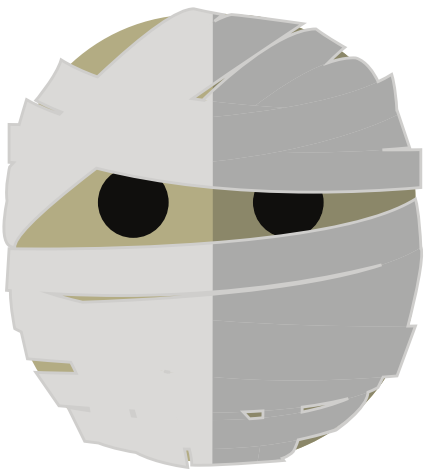


BINGO

HALLOWEEN



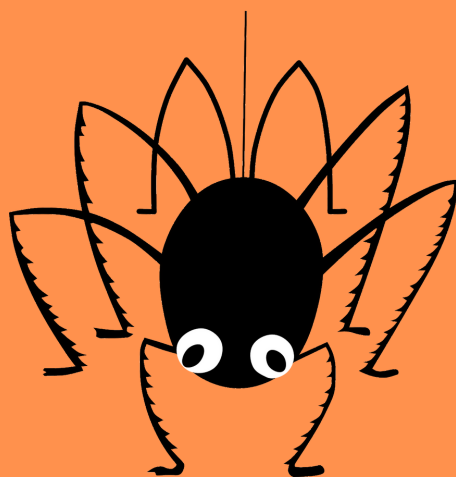
Cartes





BINGO

HALLOWEEN



règles du jeu

a

But du jeu : Être le premier à remplir sa grille de jeu.

Les images d'Halloween seront tirées au sort et le premier joueur qui réussit à remplir sa grille de bingo remporte la partie.

Imprimez les 6 fiches de grilles, ainsi que les images. Vous pouvez les plastifier pour pouvoir les réutiliser. Il vous faut des jetons.

Lorsqu'une ligne est remplie on dit "Halloween"... et lorsqu'une grille est remplie on dit "Bingo"